

2021-2022

Annual Report

2030 Strategy

Limiting, Adapting, Responding and Recovering in a Changing Climate

Stroud District Council



Published March 2022

Contact: 2030@stroud.gov.uk

Visit: www.stroud.gov.uk

[#StroudDistrict2030](https://twitter.com/StroudDistrict2030)

Foreword

CLLR. DOINA CORNELL, LEADER OF STROUD DISTRICT COUNCIL – LABOUR & COOPERATIVE PARTY



The latest report from the Intergovernmental Panel on Climate Change was stark - many of the impacts of global warming are now "irreversible". Yet the report also states that there is still a brief window of time to avoid the very worst. From the moment that Stroud District Council declared a climate emergency in 2018, we've always recognised that we cannot make a significant impact on reducing carbon emissions or reversing ecological damage on our own, but must work in partnership across our district, with public, private and

community sectors.

In 2020 we adopted a detailed strategy and plan to map a pathway to what could be achieved together in our district. You will find in this report the progress that has been made since then on all aspects of the plan, on energy, retrofit, travel, the economy, waste, nature's recovery and much more. As households face rising fuel bills, I'm especially glad to see how we are combatting fuel poverty by investing in

CLLR. CHLOE TURNER, CHAIR OF ENVIRONMENT COMMITTEE – GREEN PARTY

Councils across the UK are grappling with how to play their part in tackling the climate and ecological emergencies. Stroud District Council was among the first to acknowledge the urgency and scale of action required. A year on from publishing the Strategy and Plan that so many of you helped us shape, it's time to look closely at how we're doing.

You'll see that we have been busy. We've put our industrial heritage to good use by heating our offices with the mill streams alongside them, and used our Local Plan policies to promote renewable energy generation across the district. We've begun the huge task of making our council homes energy efficient, working with partners and piloting new technologies. We have active projects in every theme you helped us identify.

But with most of the district's greenhouse gas emissions outside the Council's direct control, we always knew we couldn't do it alone. So, we now have a 2030



Table of Contents

Introduction ----- Page 6

[Plan on a Page](#) ----- Page 7-8

[The First Next Step](#) ----- Page 9

[Everything in our Power](#) ----- Page 11-12

[A Few Highlights](#) ----- Page 13-14

The Retrofit Challenge _ ----- Page 15

Mainstream Renewables _ ----- Page 19

Nature Know No Boundaries _ ----- Page 23

Increase Travel Options _ ----- Page 25

Detail the Economic Vision _ ----- Page 27

Communicate the Waste Hierarchy _ ----- Page 29

District Dialogue _ ----- Page 31

Summing Up _ ----- Page 35

The First Next Steps _ ----- Page 36

Introduction

SINCE THE ADOPTION OF OUR 2030 STRATEGY AND MASTERPLAN IN MARCH 2021 WE HAVE BEEN BRINGING EVEN MORE ENERGY AND FOCUS TO OUR EFFORTS TO LOWER CARBON, ENHANCE BIODIVERSITY AND BUILD RESILIENCE AND SUSTAINABILITY IN OUR DISTRICT.

It cannot be ignored that there are significant, multiple challenges facing us all. It is therefore important to take stock of the progress being made despite these and, to recognise and understand more about how we are, already, adapting, limiting and recovering.

This report revisits the key priorities set out under each of the 7 organising themes of the Masterplan to provide an overview of what has been happening, what is coming and the things we can all do towards the 2030 ambition.

CARBON NEUTRAL & NET ZERO

Stroud District Council has been monitoring its emissions for nearly 15 years. Global understanding of emissions monitoring has evolved rapidly and continues to do so. Confusion surrounding terminology is inevitable when things accelerate as quickly as this. Therefore, it's important we clarify our own position.

We committed to working towards a carbon neutral district by 2030 and therefore set a localised interim target to the national Net Zero by 2050 goal. This means we must reduce our emissions, as far as is reasonably possible, and offset what remains. Reduction is prioritised over offsetting.

There are 3 scopes under which emissions reduction can occur:

- Scope 1 is emissions as a direct result of onsite activity (e.g. gas firing a boiler for heat);
- Scope 2 is indirect emissions (e.g. those associated with generation of electricity bought in for heat and power)
- Scope 3, indirect emissions by association (e.g. procurement or employee commuting).

Scopes 1 and 2 are where we have the most influence and where we have made the most gains, but we are continuing to learn more about how we can increase our influence and impacts over Scope 3.

Plan On A Page - The 2030 Vision

Energy
consumed in
the district is
locally and
renewably
generated
and energy
waste is
minimised.

Retrofit in
the *built*
environment
is achieving
low carbon
operation.
The district
benefits from
efficient,

We are
protecting
and nurturing
the *natural*
environment
whilst
mitigating
and adapting
with

*Tackle the
Climate and
Ecological
Emergency:*

Achieve the
commitments
set for 2021-
2024 of The

*Sustainable
Construction
& Retrofit:*

Use
partnerships
and establish
a sustainable
construction

Biodiversity:

With
communities
& partners
protect green
infrastructure
and
biodiversity

Networks for
*transport of
all kinds*
favour no
and low
carbon travel
choices.

Locally based
employment
and
purchasing
drives a
circular
economy
helping us
deliver on

Waste from
manufacture
and use is
disappearing
as products
last longer
and are
designed to
be re-used.
People are

The council
and district
communities
are
collaborating
in an
inclusive way
with an ethos
of respect for

Mobility:
Support
integrated
travel
systems and
the
development
of electric
vehicle

*Circular
Economy:*
Develop
foundations
of circular
economy.

*Renewable
Energy:*
Increase the
proportion of
energy
generated
and explore
decarbonisin



The First Next Step

GOVERNANCE AND COMMUNITY

WE SAID...

We will expand our 2030 governance systems to include public representation



WE HAVE:

- Taken our place to play an active part in the Leadership Gloucestershire Climate Group to join up public sector approaches and increase our influence
- Established the 2030 Community Action Officer role to focus on engagement and an Environmental Performance Officer to work on quality management systems.
- Put 2030 at the forefront of 'The Council Plan'. Its Environment and Climate theme embeds our priorities as part of our whole council business.
- Ensured we are well informed, being active in networks and forums that offer technical and specialist insights and continued professional development.
- Supported the Local Economic Partnership Energy Sector Group as Co-Chair to be at the centre of Gloucestershire's business and industry discussions.
- Recruited community representatives to establish the 2030 Community Engagement Board (2030

WHAT'S COMING UP (2022-23)?

- With broad ranging expertise and a wealth of professional and community-based networks, the 2030 CEB will be developing their work-plan over 2022.
- Officer leadership and performance management will be further established formalising our processes and information gathering.
- Quality Management and environmental performance systems, such as ISO 14001:2015 will standardise systems and compliance for environmental management across more of the council.

ENCOURAGING ...

The first thing to do is, to reduce your demand for energy to reduce your reliance on grid top ups to your supply.

Make savings towards future investments by making improvements to your insulation levels (walls, draughts, hot water tanks, pipes); lighting (replacing with low energy lamps) and heating controls (room and radiator thermostats and a good heating/hot water programmer).

Always consult with experts. We support a free at point of use, impartial advice and grants service available to all householders:

Warm and Well, free-phone: 0800 500 3076, www.warmandwell.co.uk

TOP MARKS FOR 'COMMITMENT AND INTEGRATION'

[www https://councilclimatescorecards.uk/](https://councilclimatescorecards.uk/)



Everything
In
Our Power

Council

2030 Strategy is reported to
Environment Committee

The delivery approach is embedded
through the members' Council Plan.
Delivery action is subject to the
governance procedures of our
constitution

High level decisions will be made

Community

The 2030 Community Engagement
Board is integrating into our progress
monitoring and project development
processes and will interact with
governance on this basis.

Our partnership works and projects
establish oversight boards and steering

County

Stroud District Council is leader on the
retrofit theme in Countywide Climate
Leadership Group alongside other
sector leaders, the Local Economic
Partnership and Local Nature
Partnership.

We are working

Governance



IN OUR EXEMPLAR ROLE WE STRIVE TO BE A PATHFINDER, SHARING OUR LESSONS LEARNED TO HELP OTHERS TACKLE THE CHALLENGES.

IN OUR ENABLER ROLE WE OUTREACH TO PARTNERS AND WORK WITH THEM TO SHARE AMBITIONS AND CREATE SOLUTIONS



IN OUR ROLE AS ENCOURAGER WE MUST CREATE THE MOTIVATION AND THE RIGHT CONDITIONS FOR SOLUTIONS TO GROW.

A Few Highlights



Built Environment—The Retrofit Challenge

>£14.4M SECURED FOR COUNTYWIDE RETROFIT



Energy—Mainstream Renewables

ESTIMATE 100 TONNES OF CARBON SAVED/YEAR THROUGH 2 WATER SOURCE HEAT PUMPS



Natural Environment—Nature knows no Boundaries

>5,000 TREES PLANTED IN COMMUNITY WOODLAND AT SALMON SPRINGS



Mobility—Increase Travel Options

ENABLING ELECTRIC VEHICLES FOR ALL STAFF THROUGH SALARY SACRIFICE SCHEME



Economy—Detail the Economic Vision

AN ECONOMIC STRATEGY DRAFT PRIORITISING THE GREEN ECONOMY



Communicate the Waste Hierarchy

COMMUNICATIONS CAMPAIGNS FOCUSED ON WASTE THEMES



Community—District Dialogue

TOP MARKS FROM CLIMATE SCORECARDS - ENGAGEMENT & COMMUNICATIONS

OUR SUCCESS IN NUMBERS



GREEN FLAG AWARD

Stratford Park has been granted Green Flag status



Secured more than £14.9m of funding for home energy efficiency support



1 FINALIST AWARD

1 Finalist Award for Leadership in Climate Emergency



12
Community Representatives recruited (including Stroud District Youth Council)



INCREASE IN COMBUSTION VEHICLES



265 TONNES
The amount we have reduced our reliance on natural gas vs 2006



5000 trees planted

The increase in combustion engine vehicles is because the housing maintenance service, requiring vehicles of significant load capacity, cease to be a contracted service.

However, this puts us more in control in future over vehicles and Scope 1 emissions associated with this.



The Retrofit Challenge

TO GENERATE BOTH DEMAND AND CAPACITY IN SERVICES REQUIRED FOR LARGE SCALE RETROFIT

WE SAID...

We would be a pathfinder on our own estates for renewable energy projects; push forward a progressive Local Plan and explore how we can encourage private investment in renewables.

WE HAVE:

EXEMPLAR...

- Accelerated the path to 2030 by setting the investment plan for housing to support the 2030 target.
- Committed to ensuring our retained housing stock portfolio will be improved to achieve an average rating of SAP C by 2030, We will invest over £180 million over the next 30 years. To achieve this.
- Our 'independent living' pilot will establish a beacon project for those living in similar accommodation and help us work with tenants to demystify technology for others like them.

ENABLER...

- Taken the overarching lead on the retrofit theme for the county's 'Climate Leadership Group' to safeguard and accelerate the rate of progress on partnerships for retrofit action.
- Been chairing the award-winning affordable warmth partnership securing £10.5m of countywide funding (Local Authority Development and the Warm Homes Funds). This will be focused on the poorest performing properties and support those at risk from fuel poverty.
- A smaller grant of £80k in partnership with Gloucester City is boosting Minimum Energy Efficiency Standards enforcement and working with private sector landlords.
- Taken the lead in securing countywide partnerships and Social Housing Decarbonisation Funds (£4.414 m) to enable social landlords like ourselves work on their stock improvements.
- Secured £215k of grant money for capacity building under the 'Innovate to Renovate' initiative, addressing the challenges to setting up a local authority endorsed 'front door' to services for the private householder. This is a partnership of the district authorities of Gloucestershire along with S. Glos. developed and coordinated by Stroud District Council.

WHAT'S COMING UP (2022-23)?

- The Draft Local Plan, containing net zero sustainable construction standards will be at examination during 2022 and into 2023 and adopted later that year although exact timescales are unknown at present.
- We are scoping options with 'One Public Estate' funding to find blended solutions that support our council's low carbon aims and encourages similar in other public partners. This work also examines how we can build on our council home new-build experience of involving apprentices in these schemes.
- Skills issues are an indelible part of the retrofit challenge so, we are also supporting SGS College in pursuit of funding for facilities at the Berkeley Green UTC site and working with Active Building Centre as experts in the field.
- We are developing work with Local Partnerships and Cotswold District Council that will help us bring the strands of activity across skills, social, private and public sectors into focus and identify the route to healthier local provision in the district.

ENCOURAGING ...

The first thing to do is, to reduce your demand for energy to reduce your reliance on grid top ups to your supply.

Make savings towards future investments by making improvements to your insulation levels (walls, draughts, hot water tanks, pipes); lighting (replacing with low energy lamps) and heating controls (room and radiator thermostats and a good heating/hot water programmer).

Always consult with experts. We support a free at point of use, impartial advice and grants service available to all householders:

Warm and Well, free-phone: 0800 500 3076, www.warmandwell.co.uk

If you own a business and are looking for advice:

Target 2030, 01452 835 060 or, visit www.target2030.co.uk

A Retrofit Case Study

Over the past year, Stroud secured domestic retrofit funding from the Green Homes Grant Local Authority Delivery Scheme to improve the energy efficiency of some of the District's least efficient housing stock: park home properties.

Mostly situated off the gas grid and reliant on inefficient heating sources, park homes are not only carbon intensive to heat – but low levels of insulation mean heating needs to remain on for much of the winter. Residents of park homes suffer disproportionately from poor health outcomes, too – so supporting the retrofit of these properties delivers health and social benefits alongside carbon reductions.

Properties across two of Stroud District's most inefficient park homes sites were retrofitted with external wall insulation, delivered through the Warm and Well service and funded by the Scheme. With this insulation in place, these homes will collectively emit 970 tonnes less CO₂ – over 30 tonnes saved in the District per year.

And the benefit to the residents is tangible, too. One resident suffering with diabetes and arthritis felt that the changes had already had a positive impact on their day-to-day life and noted they strongly feel 'happier', 'less worried about heating bills' and thought that the work 'improved their mental wellbeing' and that they felt 'healthier (less likely to suffer with a cold) post insulation.'

Although it has been a cold winter, I have remained quite warm and cosy, even at night when the heating is on low the heat is retained. I can't say how pleased I was with the service.



Everything
In
Our Power

District

- the management & monitoring of emissions from their estate where they are in control of Scope1,2
- limiting Scope 3 impacts as part of their agency to influence wider change.
- understanding district wide

County

SDC Officers are supporting Gloucestershire County Council and the Countywide Coordination effort as they explore how to tackle countywide baselining and take a unified approach to accounting across the county.

Expertise

The District is receiving technical support, for their emissions data through participation in: CPD Cities Disclosure System Climate Score Card Assessment; University of Exeter/Cornwall support groups through SW Energy Hub ; ISO

Carbon
Accounting



Mainstream Renewables

RENEWABLE ENERGY NEEDS TO BECOME THE STANDARD CHOICE FOR ALL OF OUR ENERGY NEEDS

WE SAID...

We would increase renewable generation through new projects, a revised local plan and through working with distribution networks and Community Energy organisations.

WE HAVE:

EXEMPLAR...

- Our Ebley and Brimscombe Port Mill buildings are now heated utilising the historic power source through water source heat pumps to save some 97 to 156 tonnes of carbon/year.
- We are pathfinding on an innovative technology mix of fabric improvements, PV systems, ground source heat loop systems/ air source heat pumps and battery storage in our independent living accommodation. This includes our work as one of only 18 projects across England and Scotland to have secured the Social Housing Decarbonisation Fund Demonstrator grants.
- We have signed up to the Climate Disclosure Project (CDP Cities) giving our emissions transparency and providing feedback. Our 2020-2021 entry gave us a great starting point at grade C as we are being compared to much larger councils with more under their direct influence.

ENABLER...

- Our Draft Local Plan is founded upon evidence of renewable generation potential and includes policies and tools (e.g. the Policies Map) to support those wishing to build or renovate to low carbon standards as well as identifying landscape sensitivities to renewables.
- Co-Chairing the LEP Energy Sector Group whose membership include both Wales and West and, Western Power Distribution Network operators keeps us in touch as a central stakeholder.
- We have built a good relationship with Gloucestershire's Community Energy Co-Operative working to support them to secure feasibility work for a housing focused project. Whilst this eventually proved unworkable both parties remain keen to pursue different opportunities.
- We are networked to SW Energy Hub and taking advantage of their expertise to inform project design and to access their funding.

WHAT'S COMING UP (2022-23)?

- We aim to have our local plan approved and in action to steer district development to a carbon neutral 2030
- We will be improving energy efficient practices by raising awareness of how we use energy through training and energy bulletins.
- We are reviewing our own utility supply options with the need to be both ethical and sustainable in our choices as some key criteria in this decision-making process.
- We are aiming to improve our CDP Cities score

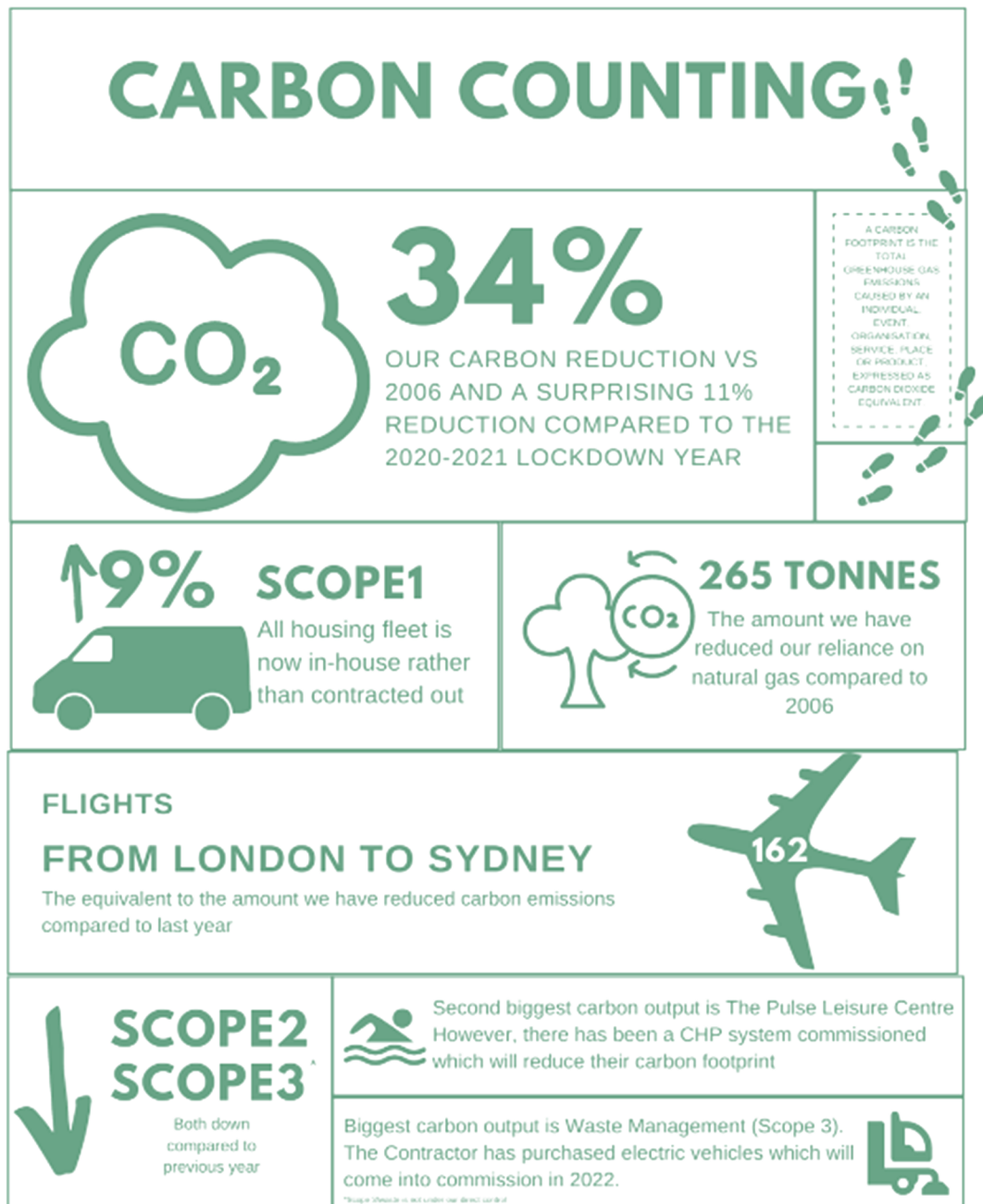
ENCOURAGING ...

There is always a lot of potential in all buildings for improving sustainability. Something we could all do is to choose a 'deep green' renewable energy tariff to be part of the solution to climate and ecological emergency.

To find advice on switching your tariff:

<https://energysavingtrust.org.uk/advice/switching-your-energy-supplier/>





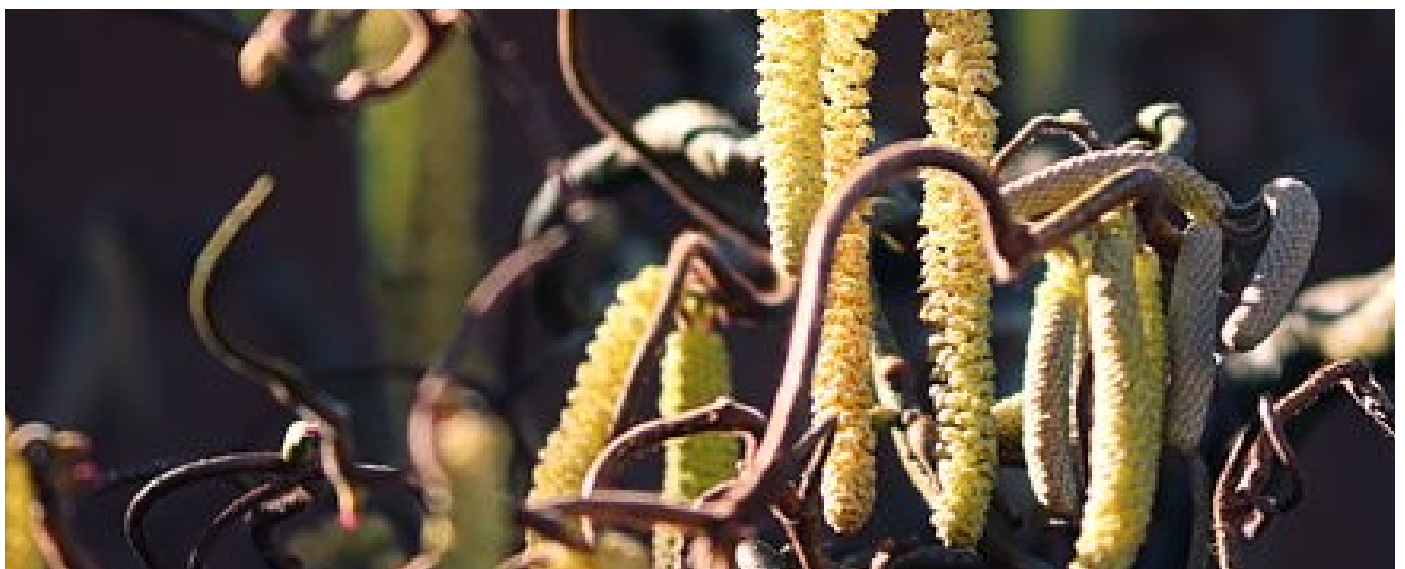
The transition to Water Source Heat Pump (WSHP) for heating the 2 mills removes natural gas from our heating needs. The WSHP uses waterpower to generate electricity for heat purposes.

The installation process saw gas turned off and then, no central heating used between August and October. This, added to the overall decrease in use of the office space means energy data is not easily compared to previous years.

DID YOU KNOW...?

The orchard trees at Museum in the Park link to our local heritage.

In addition to the 'Lodgemore non Pareil', the Stroud Apple, all the trees are purchased locally on advice from Days Cottage and are from Gloucestershire and the SW of England. Most are in the 'endangered' or 'rare' list.





Nature knows no Boundaries

PARTNERSHIPS AND PROJECTS THAT LOOK WIDER THAN OUR OWN DISTRICT BOUNDARY ARE CRITICAL

WE SAID...

We will examine the potential in our estates and land management practices and collaborate widely to improve biodiversity.

WE HAVE:

EXEMPLAR...

- Worked with 'Stroud Valley Project' , volunteers and local businesses to plant over 5,000 trees at Salmon Springs including the creation of a Tiny Forest for a quick time ecosystem.
- The Draft Local Plan "strongly encourages" strategic scale development to follow Building with Nature standards. These are a requirement at the proposed settlements at Sharpness and Wisloe as well as at, Brimscombe Port.
- Demonstrated 'No Mow May' in the care of verges in the district to support the pollinating insects that are vital to food systems.
- Delivered to Green Flag Award status in our care of Stratford Park.

ENABLER...

- An active member of the Gloucestershire Local Nature Partnership (LNP), supporting their development of the free-to-use online mapping tool which is available to landowners and farmers to view the habitat potential and connectivity of land.
- Also supported the LNP/ GFirst Local Economic Partnership to develop a Gloucestershire Nature and Climate Fund (GNCF), which is designed to create a carbon market for the county.
- Leading the Canal Restoration work, which will link up the Severn Estuary and the Severn Vale with the expertise of Gloucestershire Wildlife Trust, so that wildlife is conserved, protected and enhanced, creating new habitats that mitigate the impact of the restoration and ensuring the canal provides a corridor for wildlife.
- Secured a further six years of Flood Grant in Aid Funding to continue Stroud Valleys Natural Flood Management working until 2027 and four years of capital funding from Gloucestershire County Council

WHAT'S COMING UP (2022-23)?

- Officer resource and expertise for biodiversity and estates management is at capacity working to keep our green spaces safely maintained and our new developments in line with planning policies for conservation. We are increasing our capacity with a new post focused on biodiversity and nature recovery. This post will help us shape strategy and action plans and coordinate efforts across the council for improved outcomes.
- An existing Sustainable Development Checklist will be updated in 2023 following the adoption of the Local Plan as a supporting document for District developments.
- Greater evaluation will help evaluate the benefits of the natural flood management work in reducing flood risk.
- Practical action projects to physically improve environments will continue such as pond creation schemes

ENCOURAGING ...

Whether or not you have green space of your own there is still scope to get involved:

Visit the walled garden at the Museum in the Park for inspiration of gardening for wildlife. We have a sloping garden, like many people in the district, so the walled garden gives people ideas about what they might try to plant.



Take part in community planting initiatives by volunteering

<https://www.stroudvalleysproject.org/volunteer>



Increase Travel Options

REDUCE CAR JOURNEYS, ESPECIALLY COMBUSTION VEHICLES; SUPPORT ACTIVE AND PUBLIC TRAVEL

WE SAID...

We would start with the council culture around travel for work and engage with our contractors about their vehicles. We would work in partnership and create new ones to explore community travel options.

WE HAVE:

EXEMPLAR...

- Established a salary sacrifice scheme to encourage staff to consider an electric vehicle as their next car through tax a leasing system. This widens the support that continues to be available for purchasing bikes and e-bikes and accessories under the cycle-to-work scheme.
- Begun to scope the options for EV Infrastructure in readiness for expected proposals for on street provision from Gloucestershire County Council and the Highways Authority. Allocating £12k for the commissioning of expertise to support this.
- Set up a Walking and Cycling Task and Finish Group, with a focus on how to prioritise future spending and unlock constraints.
- Started work on producing a strategic outline business case for the re-opening of Stonehouse Bristol Road railway station – which would re-establish a Bristol-Birmingham mainline rail service for the Stonehouse-Stroud (Stroudwater) area.

ENABLER...

- We are supporting emerging community car clubs to increase access to electric vehicles and enable households to decrease or even, relinquish ownership of a personal car.
- The Council's taxi and private hire vehicle policy is being reviewed to move from an age policy to an emissions policy. The aim is to reduce the number of higher emission vehicles licensed and to look at a longer-term strategy for encouraging ultra-low emission vehicles.
- The Council monitors NO₂ levels across the district throughout the year. The raw data for 2021 has been collected but currently awaits the publication of a 'bias adjustment factor' by DEFRA

WHAT'S COMING UP (2022-23)?

- Implementation of any recommendations brought to Environment Committee by the Cycling and Walking Task and Finish Group
- Finalise a development strategy through the Draft Local Plan that concentrates on the need to minimise the need for travel and plans for the development of multi-modal interchanges to facilitate public and active travel. The Sustainable Transport Strategy which supports the Local Plan will be updated in 2022.
- Establish a working group for vehicle licensing to develop and consult on an emission policy.
- Identify strategy and projects for EV Infrastructure.
- We are delivering new build social housing that is 'EV Ready'
- Continue to find community transport projects that pool the use of vehicles through concepts like car clubs to support those choosing to reduce pollution, congestions and be more active in the way they travel.
- We are considering the area around Stroud Rail Station for improvements in terms of layout, access,

ENCOURAGING ...

Many of us are not returning to an everyday commute; this will be good for road transport associated emissions, but we will all need to think more about how we use energy at home to safeguard any overall carbon benefit.

If you do have to travel, please consider the benefits of a more 'active' journey, even if you can only do it for part of the way.

Tools to help you plan a journey that could lower your carbon footprint, increase your daily activity, or give you time for a sit-down while a bus driver takes on the frustration of the rush hours.

Plan a journey with train times or bus journeys by selecting a 'mode' of travel when you use online maps
Download the stagecoach app for real time information on when that bus will come:

<https://www.stagecoachbus.com/promos-and-offers/national/stagecoachbusapp#>

Explore Sustrans website for routes on the National Cycle Network (for cycling and walking) and lots of support articles on bike maintenance and how to support employees to cycle to their workplace:

<https://www.sustrans.org.uk/>



Detail the Economic Vision

DEVELOP ECONOMIC STRATEGY IN LINE WITH 2030 STRATEGY

WE SAID...

We would review our procurement policies, review waste monitoring whilst building on our district wide track record of recycling and reusing and exploring new potentials in our waste.

WE HAVE:

EXEMPLAR...

- The council ethical investment policy was approved by council in February 2022
- Written and consulted upon an Economic Development Strategy which prioritises the green economy sector and recognises that all businesses can become more sustainable through changes in working practices.
- Introduced a hybrid working policy and are streamlining service provision for better efficiency and data security. These measures support staff lifestyle choices and reduce some of our environmental impacts such as reducing print and paper waste.
- We have invested in the Social Value Portal system, this supports procurement processes to develop and monitor positive social impacts.
- We have increased staff capacity to include roles focused on delivering better sustainability outcomes through work in tourism and with tenants on home energy efficiency support.
- Developed a Draft Canals Strategy for making the most of our canal network to include an analysis of the carbon footprint of our canal-side communities, to identify interventions to reduce long term impacts.

ENABLER...

- Facilitated and supported exciting new projects for investment in the area including the Severn Edge bid for Nuclear Fusion to come to Berkeley.
- Set up a Market Towns Forum to work with town councils and local businesses to support investment in our market towns, including developing digital marketing and local sustainable

WHAT'S COMING UP (2022-23)?

- The Ethical Investment Policy will be reviewed annually, performance reporting will be part of the annual outturn report and quarterly reports to Audit and Standards Committee.
- The Economic Development strategy action plan is in its early implementation. This focuses on:
 - How to improve digital connectivity
 - facilitating business development without travel
 - Work with Growth Hubs to support green businesses through sector focussed business groups
 - Work with higher education providers, particularly in terms of land management

ENCOURAGING ...

If you are a business decision-maker we encourage you to think about your spheres of influence. Consider where you can encourage more sustainable practice by managing the things under your direct control and by encouraging, advising, and incentivising your suppliers and customers to make more sustainable choices.

If you are an employee, think about the way you use the work environment, could you print less, use less packaging in your lunchbox, turn more equipment off at the switch at the end of the day?

If you are a consumer then your everyday choices are an incentive to businesses to do better. Shop local, invest in more durable items and pay attention to the 'story' behind the products you choose.





Communicate the Waste Hierarchy

RAISE THE PROFILE OF THE WASTE HIERARCHY TO REDUCE AND AVOID WASTE

WE SAID...

We would consider waste reduction opportunities on our own estates and work closely with our waste partner on our 2030 efforts and explore the opportunities in our communities better.

WE HAVE:

EXEMPLAR...

- We are reviewing our service provision with a focus on providing better service to our communities. We are trying to reduce the number of steps in our processes, increasing access by providing more channels to engage with us. A common benefit in this is reducing the need to print and mail information.

ENABLER...

- Working with contractors supporting the maintenance of our social housing properties to monitor recycling rates in relation to the waste streams associated with property decoration. Last year 99.65% of waste was recycled, equivalent to 364.14 tonnes.
- Revising KPI targets, aimed at recognising new 'normal' waste levels post-covid working with our waste partner, Ubico.
- Committed to several electric fleet vehicles, particularly for our street cleansing fleet. An electric road sweeper is expected to become operational in the coming months, which will be one of the

COVID-19, PPE, TEST KITS AND, MORE PEOPLE SPENDING MORE TIME AT HOME HAS INCREASED KERBSIDE WASTE RATES.

first



WHAT'S COMING UP (2022-23)?

- An officer action group with cross-council membership will enable us to understand more about the waste issues across our estate and how we can baseline and target these.
- Community engagement will promote positive action and encourage waste saving ideas to come forward.
- We are committed to digitising waste service processes, introducing on board technology in our waste vehicles to increase information flow and improve customer service. The procurement process for this technology is underway and configuration will start in 2023. The ways this can support us in

ENCOURAGING ...

SDC is working with GCC and the other 5 local authorities in the county to deliver a communications campaign promoting waste reduction.

The current campaign is re-use and repair, although other themes will be covered, including food waste, which following compositional analysis, we know is still prevalent in the residual (grey bin) stream.

<https://www.gloucestershirerecycles.com/repair/>

Also, check out the Repair Café and its pop-up sessions calendar:

<http://www.atelierstroud.co.uk/repair-cafe/>





District Dialogue

PUTTING COMMUNITY AT THE HEART OF DELIVERY

WE SAID...

We would ensure the climate emergency response is central to the Council Plan with public representation in 2030 governance and activity to encourage stakeholders throughout the district to take action

WE HAVE:

EXEMPLAR...

- Adopted the plan for the council (referred to in the Strategy document as 'The Corporate Development Plan', this is now called the 'Council Plan'). The plan spans Oct 2021 to 2025. Environment and Climate Change is one out of the three overarching themes, with several objectives including the establishment of 2030 Community Engagement Board and informative community webpages.
- Recruited an Environmental Performance Officer to monitor our carbon reducing progress and lead on the development of environmental management to the ISO14001:2015 standards.
- Completed research into domestic and business attitudes to energy efficiency and incentives and the challenges and opportunities of the council tax, business rates and social return on investment processes.

ENABLER...

- Integrated 2030 Strategy to internal communications channels including a section on our intranet and staff information sessions on our strategy and the steps they can take to support it.
- Established the 2030 Community Engagement Board which is made of 10 volunteer community reps, plus 4 cross-party members and 2 youth council members, all with wide spheres of influence and knowledge of social issues.
- Continued our support to the Transition Stroud led Climate Action Network Forum
- Bought licences to use 'Grantfinder' services that enable us to identify funding stream potentials for project ideas in the community. We have also re-worked Community Grant Scheme and Capital Infrastructure Levy application processes to include 2030 ambition into the criteria.
- Re-worked our website to give clearer and broader reference for those wishing to engage in the 2030 agenda.

WHAT'S COMING UP (2022-23)?

- We must continue to build on our efforts in the commitments we made as exemplar so that community engagement action is well supported by our understanding of progress and, through staff training, the agenda itself.
- 2030 CEB will be working and consulting with their communities to deliver a workplan in 2023 and the board is linked to our Equality Diversity and Inclusion (EDI) workstream.
- Our communications efforts will be built upon embedding #StroudDistrict2030 as a means of raising awareness of what everybody is doing.
- Our 2030 Community Engagement Officer will continue to engage with groups and networks to support community activity like the Nature Festival being planned for the Spring.
- Stroud District Youth Council are being supported by officers to evolve their plans to deliver on their commitment.



TOP MARKS FOR 'COMMUNITY ENGAGEMENT & COMMUNICATIONS'

WWW.COUNCILCLIMATESCORECARDS.UK/



ENCOURAGING ...



The famous Ghandi quote...

‘Be the change you want to see’

...is full of wisdom as people are more likely to follow a good example.

Choose from some simple actions and take a leap at: www.takethejump.org

1. **End Clutter—keep things at least 7 years**
2. **Eat Green—more plants in your diet**
3. **Travel fresh– no more dependence on personal vehicles**
4. **Dress Retro—only 3 new items a year**
5. **Holiday local—reducing flights, 1 every 3 years**
6. **Change the system—use your behaviour to nudge for a change.**



If you have an idea for your community, it is important to get an understanding of whether they also feel that need and vision. The extent to which you go about finding the community perspective depends on whether you are hoping to make a change in a small group of friends or at a larger scale. Both small scale and large-scale change is needed as the cumulative effect of individuals and their communities is

FIND OUT ABOUT AND SUPPORT THE GREAT COMMUNITY PROJECTS WORKING IN OUR DISTRICT SUCH AS:



Built Environment—The Retrofit Challenge

[Gloucestershire Rural Community Council](#)

Local people solving local housing problems, creating genuinely affordable homes and strong communities. The Community-led Housing



Energy—Mainstream Renewables

[Gloucestershire Community Energy Cooperative](#)

Supporting the development of renewable energy via community shares.



Natural Environment—Nature knows no Boundaries

[Stroud Valleys Project Ltd](#)

Opportunities for people to become involved in environmental improvement through local practical action.



Mobility—Increase Travel Options

[Access Bike Project](#)

Community bike workshop that turns old bikes into opportunities for young and disadvantaged people.



Economy—Detail the Economic Vision

[Stroud Community Agriculture.](#)

Community-led farming enterprise to produce fresh organic/biodynamic produce for its members.



Communicate the Waste Hierarchy

[Freegle](#)

Don't throw it away, give it away.



Community—District Dialogue

[Climate Action Forum](#)

Share information and learning, and discuss the potential for initiatives that can help tackle the Climate Emergency.

Summing Up

OVERVIEW AND IMPLICATIONS FOR THE KEY PRIORITIES

External assessment through the Green Flag, CPD Cities, Climate Scorecards and MJ Awards processes are evidence that the council is heading in the right direction and on a firm footing with the challenges it is facing.

There has been significant progress in all areas and an increase in terms of council capacity for delivering on 2030 agendas. This has been achieved by increasing dedicated 2030 Team officer roles by 2 full time posts and, by engineering cross council support into the strategic delivery planning for the council through the Environment and Climate pillar of the Council Plan. This helps us live up to the 2030 Strategy aspiration that all council resources are mobilised in consideration of how to support 2030 agenda delivery in the district.

Looking back on 21-22 we can see how we have moved on from merely taking stock of our starting point following our declaration. and how we are even more active on problem solving; developing and sharing strategy; raising funds, securing the future of what has been working well and, developing new partnerships and programmes to take our work forward.





The First Next Steps

OUR STARTING POINT FOR 2022-23

- **Coordination:** To meet the future requirements of wider scale action in Phase 2 we must maximise on each services efforts, resources and, reach into different communities. This will help us identify opportunities and, to realise these through the benefits of shared experience; collaboration and, co-production. This will be driven by establishing more officer action groups within the council. These groups bring together officers from across our council directorates to focus on key priority areas. In 2021-22 we have worked with groups focused on retrofit and EV Infrastructure and in 22-23 we will build on this for other priority areas.
- **Monitoring:** to support coordination efforts and underpin our communications to communities we need to continue to improve our understanding of the current situation. This means we have some more work to do on performance and environmental management, implementing feedback and recommendations from our work with CDP Cities and ISO activity.



Reference Documents

Document	Topic
Envi. Committee Report 06/06/19	Council response and proposed framework
2030 Strategy and Master Plan	For a description of our rationale and all our commitments
2030 Background Paper	Overview of research that informed the plan
The Council Plan	Overview of how 2030 Master Plan is embedded to the council's delivery and performance management plan
The Draft Local Plan Review	A District wide plan for managing development and conserving the environment.
Council Tax and Business rates Feasibility and Design Study	Domestic and business attitudes to energy efficiency and incentives and the challenges and opportunities of the council tax, business rates and social return on investment processes.
Ethical Investment Policy	An appendix to the Treasury Management Strategy, Annual Investment Strategy and Minimum Revenue Provision Policy Statement 2022/23, item 6C

Questions or comments to:

2030@stroud.gov.uk